

Parcela D

358.94 m<sup>2</sup>

Instalaciones  
2.50 m<sup>2</sup>

Cocina  
12.26 m<sup>2</sup>

Estar-Comedor  
32.50 m<sup>2</sup>

Garaje  
29.45 m<sup>2</sup>

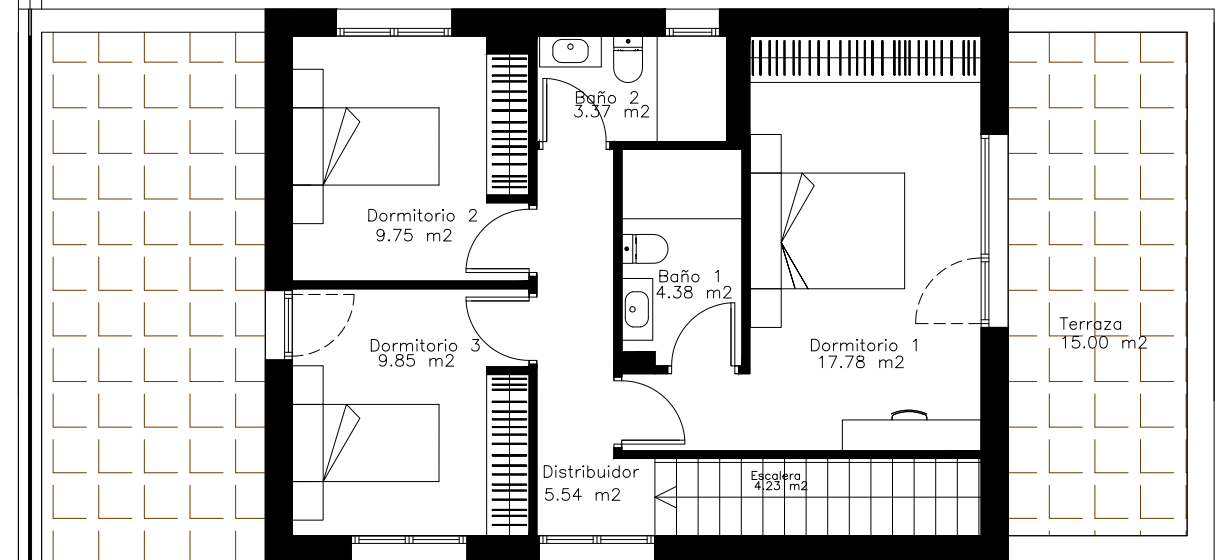
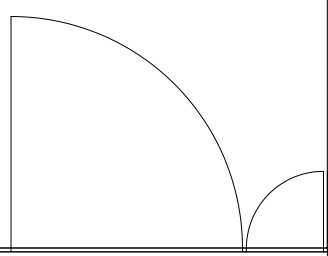
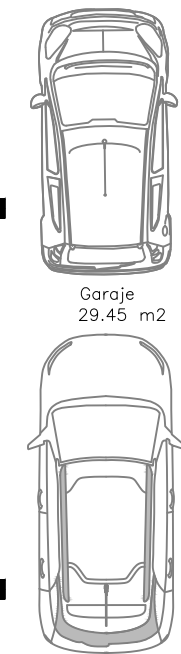
Dormitorio 4  
10.23 m<sup>2</sup>

Vestibulo  
5.78 m<sup>2</sup>

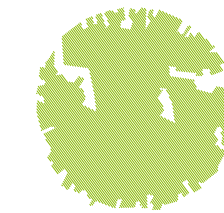
Distribuidor  
5.64 m<sup>2</sup>

Baño 3  
3.20 m<sup>2</sup>

Escalera  
3.64 m<sup>2</sup>



Terraza 31.50 m<sup>2</sup>



PARCELA D:

Superficie de parcela: 358.94 M<sup>2</sup>

Superficie útil de vivienda + garaje: 160.10 M<sup>2</sup>

Superficie útil de terrazas: 46.50 M<sup>2</sup>

Superficie de jardines: 234.29 M<sup>2</sup>

